

MEDICAL  
ASSISTANCE  
& EMERGENCY  
EVACUATION  
SERVICES





# WHY ENROLLING IN OUR **MEMBERSHIP** PROGRAM?

We know from experience that seeking help during a medical emergency brings its challenges. Delays or difficulties usually occur when contacting your insurance for help. You might experience trouble reaching the hotline or finding your insurance policy details, or feel stressed waiting for a call back to know which hospital or doctor to contact. **These delays can be critical.**

Our unique **local assistance membership program** will give you access to our **24/7 bilingual team (English-Burmese)** in case of an emergency. We would be the **single point of contact** for urgent requests, evacuation layout, relationship with medical providers of our network, and we will be here to assist you in contacting your insurer in case of hospitalisation. We can also help you arrange medical appointments if needed.

Our medical concierge services are **available for all insurance policy holders** and **even non-insured clients**.



## YOUNG PROFESSIONAL

- students abroad
- young professionals
- French VIE / VIA

starts at  
**\$55 / year / pax**



## FAMILY

- keep your loved ones safe
- explore our dedicated offers for newly arrived expats with home assistance & concierge services

starts at  
**\$150 / year / family**



## TRAVELER

- coverage in Myanmar
- extension possible to other Asian countries
- for all trip duration
- no age limit

starts at  
**\$35 / 30 days / pax**  
(groups quoted on case by case basis)



## CORPORATE

- entrepreneurs
- SMEs
- corporations
- NGOs

starts at  
**\$75 / year / pax**  
(min. 5 pax)



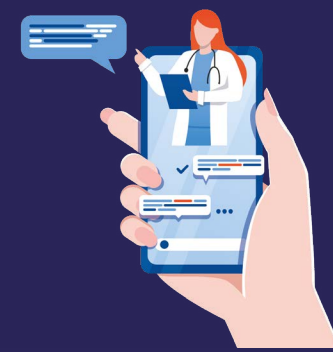


# OUR SERVICES

## MEDICAL CONCIERGE



Telemedicine consultations



House call doctor visits, medical appointments & referrals

Medical tourism

- Japan
- Malaysia
- Singapore
- South Korea
- Taiwan
- Thailand



## EMERGENCY CALL-OUTS



Language assistance  
English - Burmese  
24/7 assistance



Emergency evacuation services

Insurance communication



Local ambulance transfers



## PREVENTION & PLANNING

Team training & serious games



Emergency Response Planning



1st aid training

## SPECIAL ASSISTANCE



Roadside assistance



New arrival support & personal assistant services

Home assistance, air-con maintenance, pest control, ticketing, flower delivery...





# LET'S GET IN TOUCH!



+959 4200 52 332



+ 959 9747 35 332 via whatsapp 

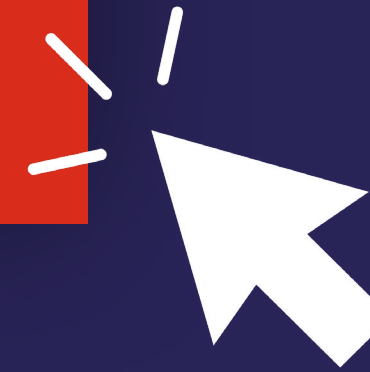


help@myanmar-assistance.com



www.fetia-assistance.com

Ask for  
a personal  
quotation



Follow us on social media:

**MYANMAR ASSISTANCE** is a proud member of

